

# GFAS and Equine



# Topics

---

What is GFAS

The Accreditation Process

Benefits

Who is Accredited

Becoming Part of GFAS





A photograph of a brown horse with a white blaze on its face, standing in a grassy field. The horse is facing slightly to the left but looking towards the camera. The background shows a fence and some trees under a clear sky.

# Global Federation of Animal Sanctuaries

- Founded in late 2007
- Helping Sanctuaries Help Animals
- Accreditation

# Accredit

---

- ① “To certify as meeting a prescribed standard”
- ② GFAS has added goal setting and resources to the process
- ③ A partnership: self-assessment followed by outside confirmation



# Benefits for the field

- Credibility for sanctuaries and the sanctuary/rescue profession rises
- The readiness for outside confirmation signals increasing confidence and professionalism
- It is a process for uniting to facilitate continuous improvement



# GFAS Standards of Excellence

---

- Based on existing standards worldwide
- Peer input and review
- Solicit ongoing input
- Revised as needed





# Standards of Excellence

- Experts such as Martha Benson
- Equine: Much input from Homes for Horses Coalition
- A living document



# To Start

---

- Contact GFAS to see which track is best



**GFAS  
Accreditation**

**GFAS  
Verification  
as a Rescue/  
Sanctuary**



First step for either



# Process for Verification

---

Second step is to fill out an application to verify you meet 7 criteria

I. Humane and responsible care of the equines (confirmed by a site visit)



2. Nonprofit status

3. Licenses and permits

4. Commercial trade prohibition-

Purchase to avoid slaughter allowed

5. No or limited contact with public

(Exceptions for domesticated animals  
and adoption programs as appropriate)

6. Animal-centric research only

7. No propagation





# 2<sup>nd</sup> step: Equine Care Form

---

## 22 questions, no attachments





Followed by a site visit





## After the site visit

---

**If confirmed, you are then a GFAS verified sanctuary and listed on our website as such.**

**Together we set a three-year goal of best next steps, possibly including entry into the accreditation process.**

Verification is reassurance to  
donors  
adopters, legislators





A brown foal is seen from behind, looking out through a wire mesh window of a wooden barn. A red bucket is visible on the left side of the window. The barn has horizontal wooden siding. The ground is covered in straw.

# Great rescues verified!

- Last Chance Corral
- Linn County Animal Rescue
- Both award winners!



# Process for Accreditation

- Same basic info
- Same equine care form



# Next step

---

## Self-evaluation of 8 key areas

- ◉ Governance
- ◉ Finances
- ◉ Guidelines





- ◉ Education/  
Other Activities
- ◉ Staffing
- ◉ Physical facilities
- ◉ Security/Safety
- ◉ Veterinary  
Medical  
Program
- ◉ (Equine care  
separate form)





The FORM!!!!!!!

● About 54 questions, 23 attachments



A brown foal is lying down on a bed of straw or hay. The foal is facing right, with its head lowered. The background is a simple, light-colored wall.

Performance rated in each area

● Adequate

● Distinctive

● Exemplary ---



# Ask for assistance

---

## Help with the questions, attachments





- **Henneke Body Condition Scoring**

---

- **Goal: All equines maintain a body condition of no less than a score 4 on the Henneke Body Condition Scoring, with exceptions documented by intake records , photographs, and ongoing veterinarian records.**

- 
- Guidelines to help you determine your sanctuary's level of success in meeting this goal:

- **Henneke Body Condition Scoring**

- All equines maintain a body condition of no less than a score 4 on the Henneke Body Condition Scoring System. (1-9). (Exceptions are made for...

- 9. Please rate your sanctuary's level of success in meeting the goal for **Nutrition: Henneke Body Conditioning Score**



- \_\_\_\_\_ Adequate \_\_\_\_\_ Distinctive \_\_\_\_\_ Exemplary
- \_\_\_\_\_ Less than adequate at this time
- \_\_\_\_\_ Other \_\_\_\_\_



- Please describe below in the grey box any possible exceptions at your sanctuary to the above guidelines. (GFAS recognizes that exceptions can be allowable or even appropriate in a given situation, if the intent of the goal is still met.) **Ratings other than “distinctive” (“distinctive” means your sanctuary has no deviations from the guidelines above) must be explained: :**



# The site visit

---





# Two Site Visitors

- Governance
- Finance
- Guidelines
- Education and Outreach
- Staffing
- Physical Facilities
- Security and Safety





# Second Site Visitor

- Animal Care specialist
  - Animal Care and Facilities
  - Records
  - Veterinary Medical Program





# Judge vs. Gathering Data



# Confidentiality

A black and white dog with a red collar is holding a yellow ball in its mouth. The dog is looking towards the camera. The background is dark and out of focus, showing some indoor plants and a warm light source.

● Lack of confidentiality will kill  
an accreditation program



Exception

Suspected animal cruelty or any other  
type of illegal activity

must be reported to proper authorities

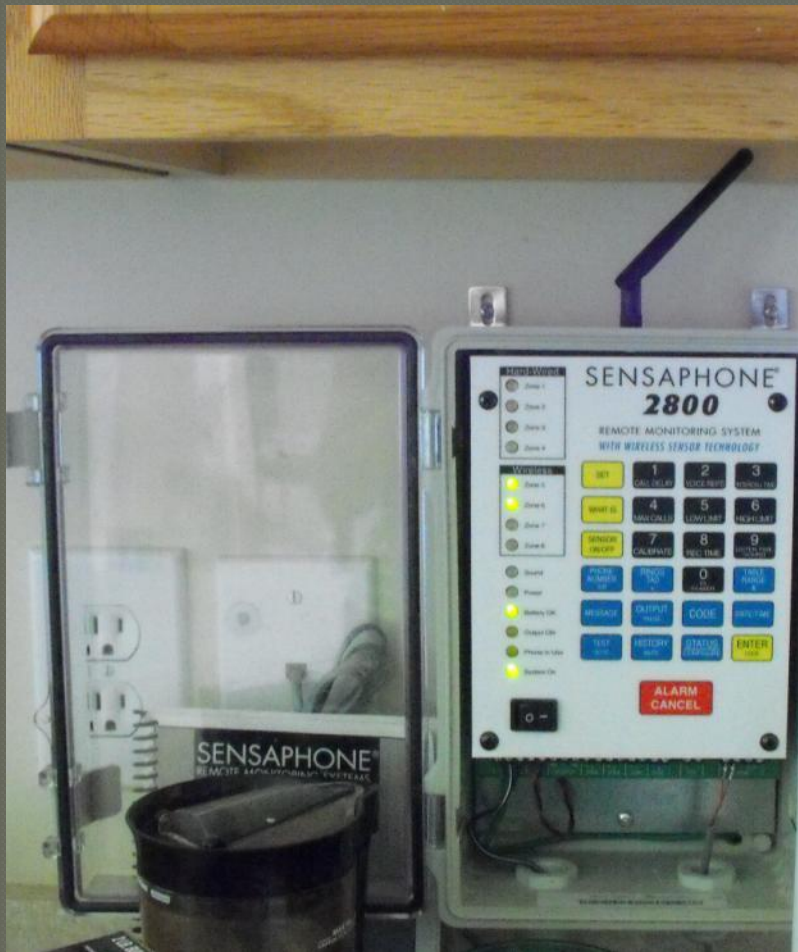




# Confirming a funding need



# Helping to identify strengths



....which  
GFAS can  
help the  
sanctuary  
receive  
credit for  
and share  
with others



# Different Roles

A close-up photograph of a brown horse with a prominent white blaze running down its face. The horse is standing behind a metal fence, and its head is slightly turned. The background shows a stable environment with wooden stalls and a metal railing. The lighting is warm, suggesting late afternoon or early morning.

Assessment

vs.

Coaching, setting  
goals

vs.

Mentoring

# Your responsibilities

---

Info requested  
from you, the  
Sanctuary  
Director

4-6 hour visit for  
both site visitors

Sanctuary  
director can do  
one “turn down”





# What is done with the data

---

GFAS staff compiles both reports and staff findings. Gives the sanctuary a list of strengths and challenges.

Accreditation, verification, or ...

Goals set, timelines

Three years goals set together





# Accredited

---

- ◉ Angel Acres Horse Haven Rescue of PA
- ◉ Cleveland Amory Black Beauty Ranch of TX
- ◉ Equine Voices Rescue & Sanctuary of AZ
- ◉ Habitat for Horses of TX
- ◉ Horse Harbor Foundation of WA
- ◉ 40+ other equine organizations in process



# Benefits for You

Funding for sanctuaries gets the smallest piece of the funding pie, when you factor out the Arcus skew.

Funders never get two things....



- Recognition by a creditable source
- Professionalizing the field
- Respect from donors, funders, legislators, potential adopters, law enforcement, media, larger animal protection community
- Opportunities for leadership as a GFAS mentor



The self-  
examination  
process  
itself results  
in positive  
growth



# Resources









# Webinars

---

## ● Grant Writing

Comments from participants:

*“The session was wonderful and I enjoyed it. I got so much useful information I am swimming in it!”*

*“Your experience as both a funder and a grant seeker is invaluable, especially to those like myself who are really new to all of this. I look forward to going over my notes and your slides again. I am determined that this year will be a successful grant writing and receiving one for us!”*

# Future Topics

---

## **Making the euthanasia decision in the sanctuary setting**

- **When and How to Say No**
- **Emergency Preparedness, Parts I and II**
- **Working with Law Enforcement**
- **Large Seizures**
- **The Recovery Process**



# Becoming part of GFAS

---

- No fee for first site visit
- No annual fee
- Pay site visit direct-average-costs every third year
- Submit annual update data....10 -15 minutes



# Volunteer

- Present webinar ideas to GFAS
  - Conduct site visits...all day course
- Wednesday!





[patty@sanctuaryfederation.org](mailto:patty@sanctuaryfederation.org)

[www.sanctuaryfederation.org](http://www.sanctuaryfederation.org)

928-472-1173